



SHERATON CLUB HOUSE AT BAHRIA, ISLAMABAD IS A JOINT VENTURE PROJECT OF 'ALI ISHAQ MALIK' AND 'ARCHITECTS INC.' WITH THE BASIC REQUIREMENT OF DEVELOPING A PLACE FOR PEOPLE TO COME, SPEND THE WHOLE DAY AND ENJOY THE LUXURIES OF LIFE.

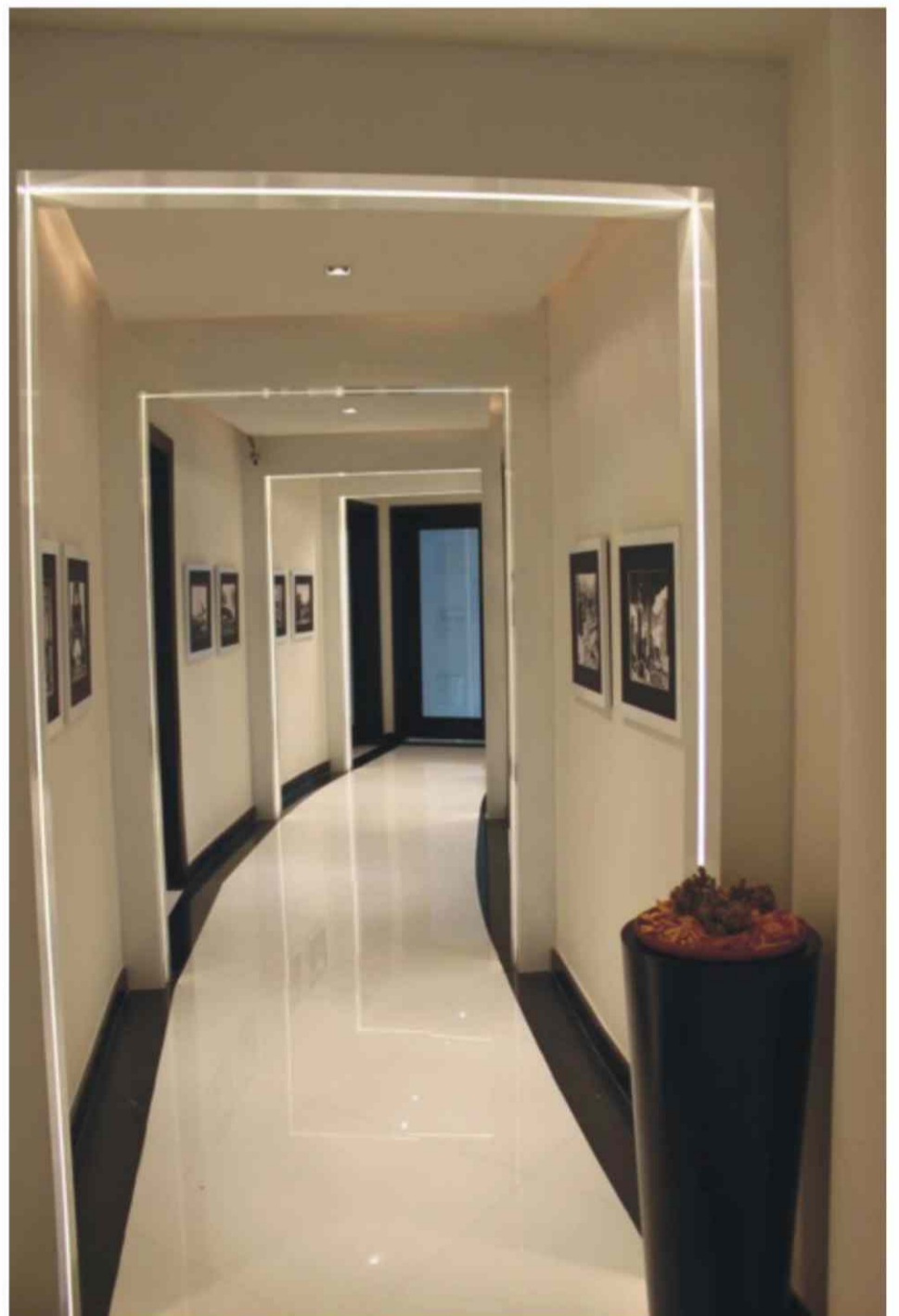


Sheraton Club House at Bahria, Islamabad is a joint venture project with Ali Ishaq Malik and Architects Inc. the basic requirement of the project was to develop a place for people where they can spend the whole day, can come and enjoy the luxuries of life. Our main idea of designing the space was to divide the club house into 2 design philosophies. We divided the recreational pro shop, restaurant, cigar room, card rooms into fusion of classic, royal and post modern interior and amalgamated Islamic art on the ceiling to damask wallpaper and leather padding on the walls.



“Golden arches making entrance an interesting hallway to world of luxury, a guiding reception area, a grand lobby having high gloss gold deco paint and carved Sheeshum wood and many more, are some of the beauties of the project giving Royal, Modern and Islamic Looks”

From the moment you enter the place you see golden arches making entrance an interesting hallway to world of luxury. There is a reception area which guides you where to go. You enter a grand lobby whose walls have been fused with high gloss gold deco paint and carved Sheeshum wood and frndi design fabric Giving it a royal yet an elegant look, with high back leather chairs and a fire place as a waiting area. Entering from a round beveled glass you enter the restaurant area which has different area to sit and dine in, having a fire place in between. With cozy leather padded back for a seating to fend inspired couches with long tables. Restaurant gives u a view of 18 hole golf course in between the mountain is just scenic.





Floral pattern tiles with amid of wooden flooring. Travertine, Kashmiri gold marble plays a major role in the high exclusive look of the space. The backlit futuristic black with a futuristic strips is the high lit complimenting the Paul Smith wallpaper. The color gold indigo plays a major role in enhancing the warmth of the restaurant. From there you can enter an executive cigar lounge has a wooden decked up ceiling in Islamic pattern in colors ranging from green and red. Wall paneling is done in 2 types of woods. One painted in high gloss polish and the other in matt finish, giving it a 3 dimensional form. High back single seaters and chester fields make the place even more exclusive. All the accessories placed in the club from vases to the tray are of Versace.

“The spa and the health club have a totally different theme, more on minimalist lines. From all white waiting area, you enter to reception area/ locker space. A curvilinear passage takes you to the spa/massage area/Turkish bath/ and gym”

On the other side the spa and the health club has a totally different theme, more on minimalist lines. From all white waiting area, you enter to reception area/ locker space. A curvilinear passage takes you to the spa/massage area/Turkish bath/ and gym. This is all white with white light and black and white framed pictures, gives the spa a very soothing yet interesting feel. This project becomes a big thing for us as while when we got the project it was just a simple club house. But while at the execution and completion a team of Sheraton visited the place as Sheraton was about to launch their exclusive hotel in close by. They opted our design and named it Sheraton club house.

**Indoor area: 12000 sq ft, Outdoor: 10000 sq ft
Start date: December 2010, Completion: May 2011.**

